

**Compatibility:** Requires Studio One 4 or higher. Nektarine and Aruba can still be used in lower versions of Studio One but DAW integration is not compatible.

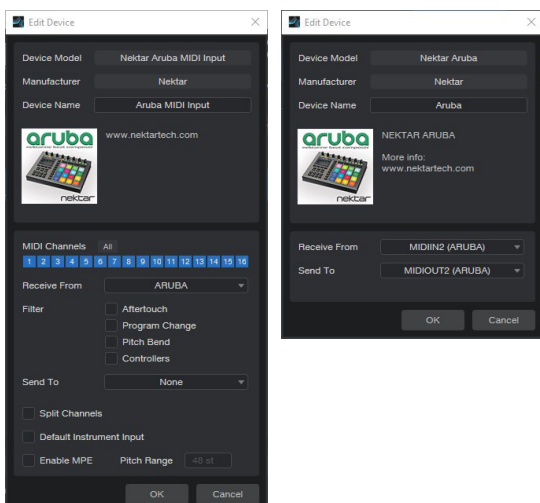
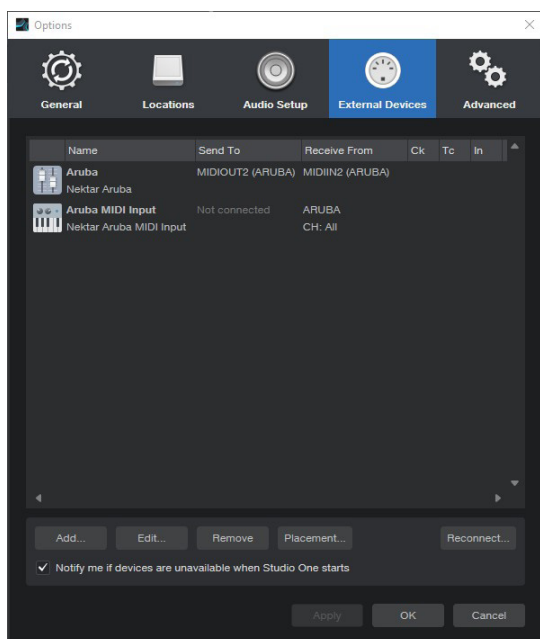
## Setup

Here are the steps you need to go through to get Studio One up and running with Aruba::

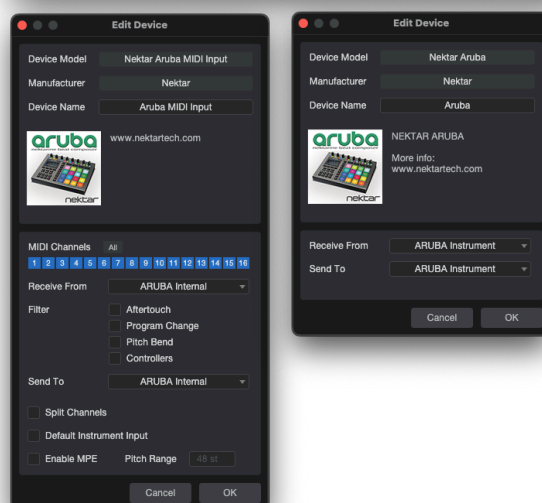
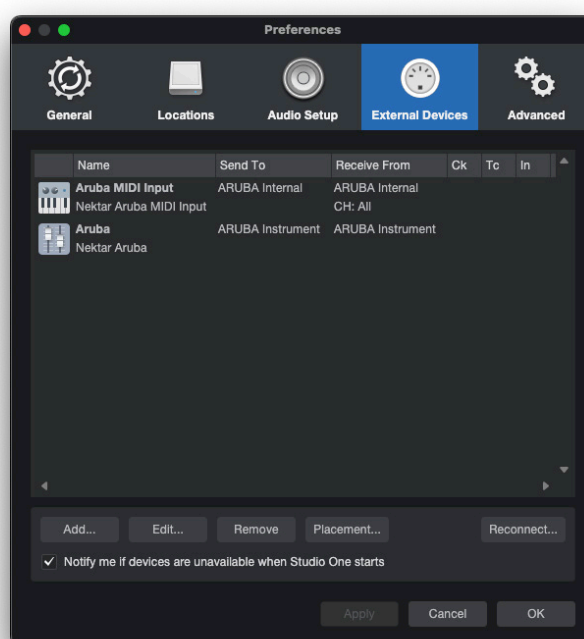
- Make sure Studio One is already installed on your computer. If not, please install and run it at least once and quit Studio One again.
- Run the Aruba\_PreSonus\_Support installer, included in the package along with this PDF guide..
- Connect Aruba to your computer via USB and make sure it's switched on.
- Launch Studio One. Aruba is detected during startup.

That's it, setup is now complete and Aruba should be communicating with Studio One.

## Windows



## MacOS



When Aruba is connected and detected by Studio One, the [DAW] button is illuminated blue and the display has been updated. The [DAW] button toggles Studio One control on/off when Nektarine is present on a track.

## Transport Buttons

Aruba's transport buttons control Studio One's transport functions exclusively, regardless of whether Nektarine mode, Aruba's Sequencer, Internal mode or Repeat is selected.

The buttons activate primary and secondary functions. The secondary functions are accessed when [Shift] is pressed:

Buttons:	Shift	Click	Rewind	Forward
<b>Description:</b>		Switch Metronome On/Off. Studio One 4 does not update the LED's color.	Moves the play position backwards by 1 bar. Hold for continued rewind.	Moves the play forward by 1 bar. Hold for continued forward.
<b>Secondary functions:</b> Press [Shift]+ [Button] to activate	n/a	<b>Pre-Count:</b> Activates Studio One 4's Preroll feature.	<b>Set L:</b> Sets the Loop Start to current play position.	<b>Set R:</b> Sets the Loop End to current play position.
Buttons:	Loop	Stop	Play	Record
<b>Description:</b>	Switch Loop On/Off. Make sure Loop Length is not 0.	Stops playback or record.	Activates play.	Activates Record
<b>Secondary functions:</b> Press [Shift]+ [Button] to activate	<b>Goto L:</b> Moves Song Position to Loop Start	<b>Undo:</b> Activates Studio One 4's Undo function.	<b>Read:</b> Switch Automation Read on/off in Studio One 4.	<b>Write:</b> Switch Automation Write on/off in Studio One 4.

Using the transport buttons to set loop points can be done quickly once it has been practiced a little:

- Use Forward/Rewind to move the Song Play Position to where you want Loop Start.
- Press [Shift]+[<<] to set Loop Start.
- Press the Forward/Rewind buttons again to move the Song Play Position to where you want Loop End.
- Press [Shift]+[>>] to set Loop End.

## [R1-8] and Display Functions

The [R1-8] pots control Studio One 4 arrangement functions

- [R1 - Loop]:** Move the current loop by the length of the loop. Press [Shift] while moving [R1] to move in 1 bar increments.
- [R2 - Loop Length]:** Change the length of the loop in 1 bar increments. Press [Shift] while moving [R2] to adjust in beats.
- [R3 - Tempo]:** Adjust the tempo in BPM. Press [Shift] while moving [R3] to adjust in 1/10 of a BPM increments.
- [R4 - Footswitch]:** Programs the footswitch behavior with a selection of 6 options.  
 INTERNAL: Retains the assignment from Aruba's Internal Mode.  
 PLAY/STOP: Toggle Studio One 4's Play/Stop buttons.  
 RECORD: Activates Studio One 4's Record button.  
 TAP TEMPO: Tap the footswitch to set the tempo in Studio One 4  
 LOOP: Switch Loop On/Off  
 ADVANCE LOOP: Moves the loop the length of the loop to the next location.
- [R5 - <Track>]:** Scroll through Studio One 4 tracks by moving the pot.
- [R6 - <Patch>]:** Scroll through browser patches by moving the pot.
- [R7 - Song Pos]:** Moves the Song Position.
- [R8 - <Marker>]:** Selects Studio One 4 markers.

[Display button 1 - Tap Tempo]:	Tap in time to set tempo in Studio One 4
[Display button 2 - Marker]:	Press to set a Studio One 4 marker at current song position. Press again to remove it.

The display buttons have additional alternate functions that can be accessed when the [Menu] button is held:

[Display button 1 - Quantize]:	Switch record quantize on/off.
[Display button 2 - 1-shot]:	When on, Live Suite only records until the end of the current loop. Playback continues with record deactivated. Use to capture Aruba sequences without recording doubled events.

## Activating Nektarine for Aruba Control

Once an instrument track hosting Nektarine is selected, press [DAW] to toggle between DAW mode and controlling Nektarine.

Aruba automatically detects the Nektarine instance hosted on the current track. Because of this, running even several hundred instances of Nektarine in any one project is a seamless control experience.

You can change track either from Aruba or directly in Studio One 4, though Aruba behaves a little different depending on the method:

- Selecting a track from Aruba always leaves Aruba in DAW mode. Press the [DAW] button to control Nektarine.
- Selecting a track hosting Nektarine directly in Studio One 4 using the mouse, activates that instance.
- Selecting any track that does not host Nektarine directly in Studio One 4, while Nektarine is active, will automatically switch back to DAW mode.
- Selecting another Nektarine track following will automatically activate that instance.

## Impact XT

If a track is selected hosting the Studio One 4 drum pad instrument Impact XT, the pads automatically map to the pads.

There are however some Impact XT patches that start the mapping at one semitone below the default but you can use the arrow buttons on Aruba to shift the pad assignments:

**Arrow Left/Right:** Shift the pads by 1 semitone

**Arrow Down/Up:** Shift the pads by 16 semitones

## Support

If you are not getting the results described, please check your installation one more time as well as the [Aruba support pages](#).