

Setup

Here are the steps you need to go through to get Reaper up and running with Aruba:

- Make sure Reaper is already installed on your computer. If not, please install and run it at least once and quit Reaper again.
- Run the Aruba_Reaper_Support installer, included in the package along with this PDF guide..
- Connect Aruba to your computer via USB and make sure it's switched on.
- Launch Reaper.
- In Reaper go to Options/Preferences and select 'MIDI Devices'.
- In the top MIDI Input list, click on the Aruba ports as listed for your OS below and tick 'Enable input from this device' and 'Enable input for control messages'.

- **MacOS:** 'ARUBA Internal'

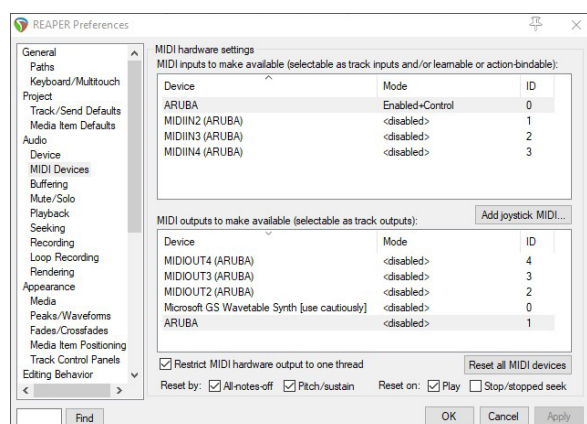
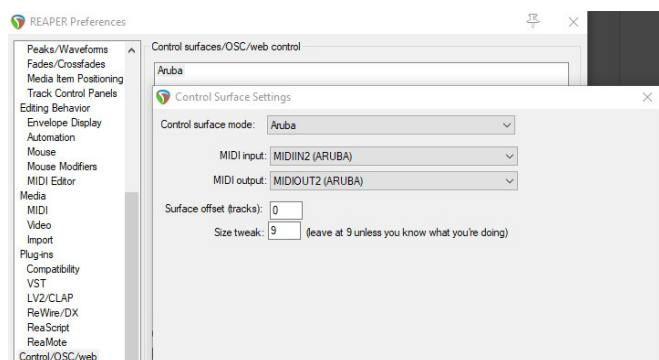
- **Windows:** 'ARUBA'

The ports should now look similar to the right image.

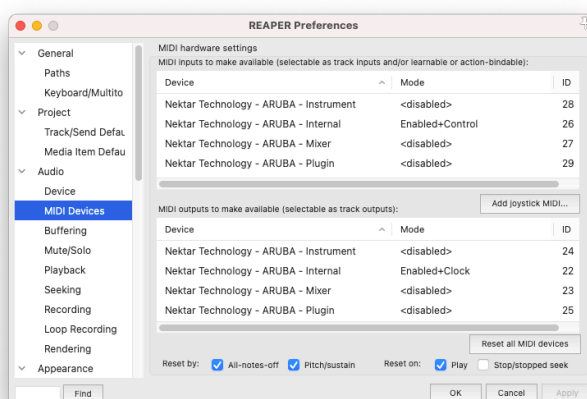
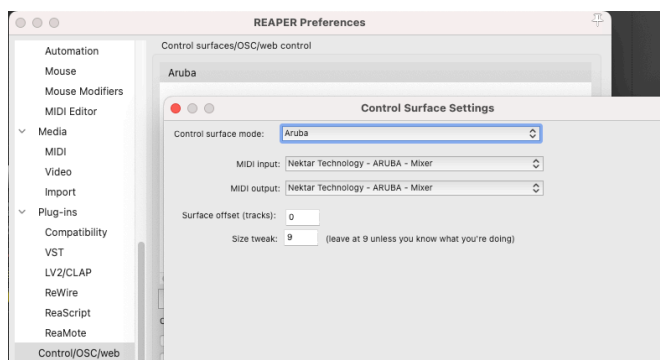
- Click 'OK' to close.
- In the left preferences pane, scroll down to the bottom of the list and select 'Control/OSC/web'.
- In the window click 'Add'.
- In the pop-up window, select your Aruba in the "Control surface mode" list. As long as Aruba is connected and switched on, Reaper should automatically detect the correct ports.
- Click 'OK'.

That's it, setup is now complete and Aruba should be communicating with Reaper.

Windows



MacOS



When Aruba is connected and detected by Reaper, the [DAW] button is illuminated blue and the display has been updated. The [DAW] button toggles Reaper control on/off when Nektarine is present on a track.

Transport Buttons

Aruba's transport buttons control Reaper's transport functions exclusively, regardless of whether Nektarine mode, Aruba's Sequencer, Internal mode or Repeat is selected.

The buttons activate primary and secondary functions. The secondary functions are accessed when [Shift] is pressed:

Buttons:	Shift	Click	Rewind	Forward
Description:		Switch Metronome On/Off. Reaper does not update the LED's color.	Moves the play position backwards by 1 bar. Hold for continued rewind.	Moves the play forward by 1 bar. Hold for continued forward.
Secondary functions: Press [Shift]+ [Button] to activate	n/a	Pre-Count: Not in use. Reaper does not have a pre-count feature.	Set L: Sets the left loop point to current play position.	Set R: Sets the right loop point to current play position.
Buttons:	Loop	Stop	Play	Record
Description:	Switch Loop On/Off. The buttons LED is green when on.	Stops playback or record.	Activates play.	Activates Record
Secondary functions: Press [Shift]+ [Button] to activate	Goto L: Moves Song Position to the left loop point.	Undo: Activates Reaper's Undo function.	Read: Switch Automation Read on/off in Reaper.	Write: Switch Automation Write on/off in Reaper.

Using the transport buttons to set loop points can be done quickly once it has been practiced a little:

- Use Forward/Rewind to move the Song Play Position to where you want the left locator.
- Press [Shift]+[<<] to set the left locator.
- Press the Forward/Rewind buttons again to move the Song Play Position to where you want the right locator.
- Press [Shift]+[>>] to set the right locator.

[R1-8] and Display Functions

The [R1-8] pots control Reaper arrangement functions

- [R1 - Loop]:** Move the current loop by the length of the loop. Press [Shift] while moving [R1] to move in 1 bar increments.
- [R2 - Loop Length]:** Change the length of the loop in 1 bar increments. Press [Shift] while moving [R2] to adjust in beats.
- [R3 - Tempo]:** Adjust the tempo in BPM. Press [Shift] while moving [R3] to adjust in 1/10 of a BPM increments.
- [R4 - Footswitch]:** Programs the footswitch behavior with a selection of 6 options.
 INTERNAL: Retains the assignment from Aruba's Internal Mode.
 PLAY/STOP: Toggle Reaper's Play/Stop buttons.
 RECORD: Activates Reaper's Record button.
 TAP TEMPO: Tap the footswitch to set the tempo in Reaper
 LOOP: Switch Loop On/Off
 ADVANCE LOOP: Moves the loop the length of the loop to the next location.
- [R5 - <Track>]:** Scroll through Reaper tracks by moving the pot.
- [R6 - <Preset>]:** Scroll through Instrument presets by moving the pot. Use Reaper's browser or consider using Nektarine's browser for preset/patch selection.
- [R7 - Song Pos]:** Moves the Song Position.
- [R8 - <Marker>]:** Selects Reaper markers.

[Display button 1 - Tap Tempo]:	Tap in time to set tempo in Reaper.
[Display button 2 - Marker In]:	Press to set a Reaper marker at current song position.
[Shift]+[Marker In]:	Remove the current marker.

Activating Nektarine for Aruba Control

Once an instrument track hosting Nektarine is selected, press [DAW] to toggle between DAW mode and controlling Nektarine.

Aruba automatically detects the Nektarine instance hosted on the current track. Because of this, running even several hundred instances of Nektarine in any one project is a seamless control experience.

You can change track either from Aruba or directly in Reaper, though Aruba behaves a little different depending on the method:

- Selecting track from Aruba always leaves Aruba in DAW mode. Press the [DAW] button to control Nektarine.
- Selecting a track hosting Nektarine directly in Reaper using the mouse, activates that instance.
- Selecting any track that does not host Nektarine directly in Reaper, while Nektarine is active, will automatically switch back to DAW mode.
- Selecting another Nektarine track following will automatically activate that instance.

Support

If you are not getting the results described, please check your installation one more time as well as the [Aruba support pages](#).