

## Setup

Here are the steps you need to go through to get Cubase up and running with Aruba::

- Make sure Cubase is already installed on your computer. If not, please install and run it at least once and quit Cubase again.
- Run the Aruba\_Steinberg\_Support installer, included in the package along with this PDF guide..
- Connect Aruba to your computer or a powered USB hub connected to your computer and make sure it's switched on.
- Launch Cubase.
- In Cubase go to Studio/Studio Setup and select MIDI Port Setup.
- Untick all of the ports in the 'In 'All MIDI Inputs' column except for

- macOS: 'ARUBA Internal'

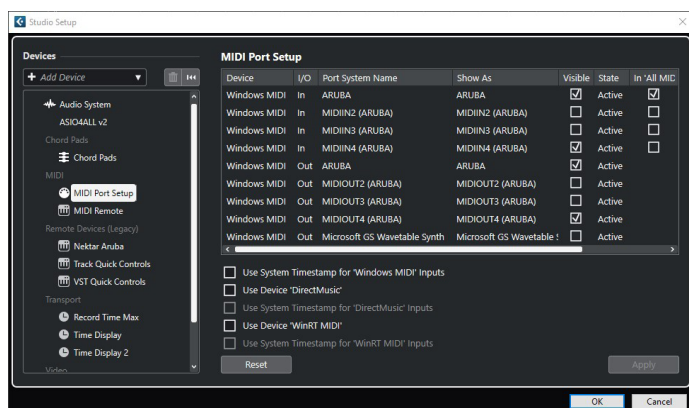
- Windows: 'ARUBA'.

The ports should now look similar to the image below.

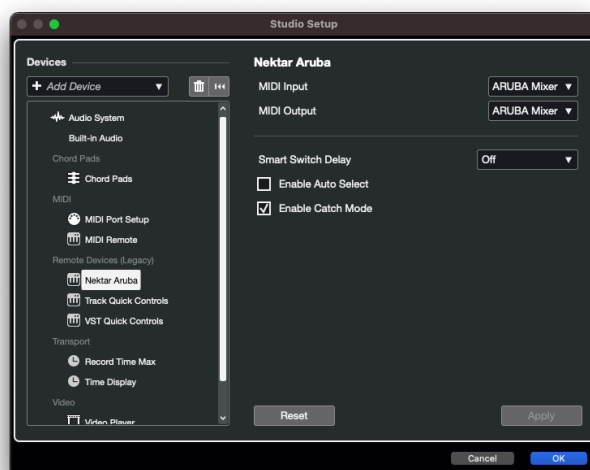
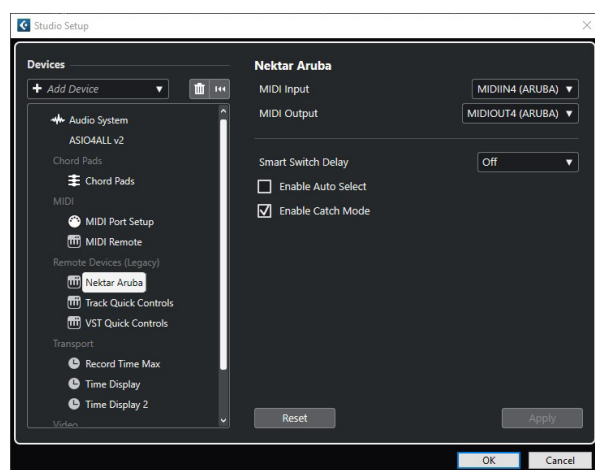
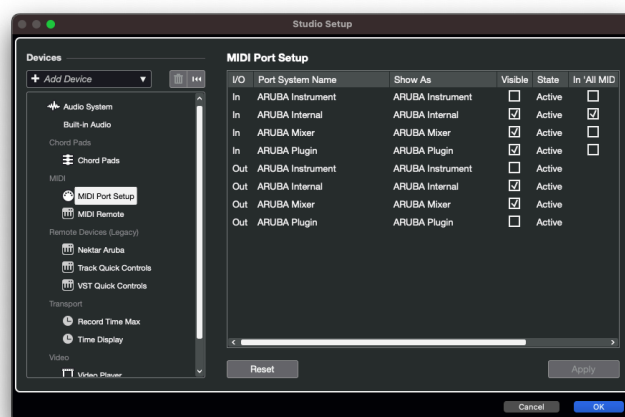
- Click 'OK' to close the Studio Setup window.

That's it, setup is now complete and Aruba should be communicating with Cubase.

## Windows



## MacOS



When Aruba is connected and detected by Cubase, the [DAW] button is illuminated blue and the display has been updated. The [DAW] button toggles Cubase control on/off when Nektarine is present on a track.

## Transport Buttons

Aruba's transport buttons control Cubase's transport functions exclusively, regardless of whether Nektarine mode, Aruba's Sequencer, Internal mode or Repeat is selected.

The buttons activate primary and secondary functions. The secondary functions are accessed when [Shift] is pressed:

Buttons:	Shift	Click	Rewind	Forward
<b>Description:</b>		Switch Metronome On/Off. Cubase does not update the LED's color.	Moves the play position backwards by 1 bar. Hold for continued rewind.	Moves the play forward by 1 bar. Hold for continued forward.
<b>Secondary functions:</b> Press [Shift]+ [Button] to activate	n/a	<b>Pre-Count:</b> Not in use. Cubase does not have a pre-count feature.	<b>Set L:</b> Sets the left loop point to current play position.	<b>Set R:</b> Sets the right loop point to current play position.
Buttons:	Loop	Stop	Play	Record
<b>Description:</b>	Switch Loop On/Off. The buttons LED is green when on.	Stops playback or record.	Activates play.	Activates Record
<b>Secondary functions:</b> Press [Shift]+ [Button] to activate	<b>Goto L:</b> Moves Song Position to the left loop point.	<b>Undo:</b> Activates Cubase's Undo function.	<b>Read:</b> Switch Automation Read on/off in Cubase.	<b>Write:</b> Switch Automation Write on/off in Cubase.

Using the transport buttons to set loop points can be done quickly once it has been practiced a little:

- Use Forward/Rewind to move the Song Play Position to where you want the left locator.
- Press [Shift]+[<<] to set the left locator.
- Press the Forward/Rewind buttons again to move the Song Play Position to where you want the right locator.
- Press [Shift]+[>>] to set the right locator.

## [R1-8] and Display Functions

The [R1-8] pots control Cubase arrangement functions

<b>[R1 - Loop]:</b>	Move the current loop by the length of the loop. Press [Shift] while moving [R1] to move in 1 bar increments.
<b>[R2 - Loop Length]:</b>	Change the length of the loop in 1 bar increments. Press [Shift] while moving [R2] to adjust in beats.
<b>[R3 - Tempo]:</b>	Adjust the tempo in BPM. Press [Shift] while moving [R3] to adjust in 1/10 of a BPM increments.
<b>[R4 - Footswitch]:</b>	<p>Programs the footswitch behavior with a selection of 6 options.</p> <p>INTERNAL: Retains the assignment from Aruba's Internal Mode.</p> <p>PLAY/STOP: Toggle Cubase's Play/Stop buttons.</p> <p>RECORD: Activates Cubase's Record button.</p> <p>TAP TEMPO: Tap the footswitch to set the tempo in Cubase</p> <p>LOOP: Switch Loop On/Off</p> <p>ADVANCE LOOP: Moves the loop the length of the loop to the next location.</p>
<b>[R5 - &lt;Track&gt;]:</b>	Scroll through Cubase tracks by moving the pot.
<b>[R6 - Song Pos]:</b>	Moves the Song Position.
<b>[R7 - &lt;Marker&gt;]:</b>	Selects Cubase markers

[Display button 1 - Tap Tempo]:	Tap in time to set tempo in Cubase
[Display button 2 - Marker In]:	Press to set a Cubase marker at current song position

## Activating Nektarine for Aruba Control

Once an instrument track hosting Nektarine is selected, press [DAW] to toggle between DAW mode and controlling Nektarine.

Aruba automatically detects the Nektarine instance hosted on the current track. Because of this, running even several hundred instances of Nektarine in any one project is a seamless control experience.

You can change track either from Aruba or directly in Cubase, though Aruba behaves a little different depending on the method:

- Selecting track from Aruba always leaves Aruba in DAW mode. Press the [DAW] button to control Nektarine.
- Selecting a track hosting Nektarine directly in Cubase using the mouse, activates that instance.
- Selecting any track that does not host Nektarine directly in Cubase, while Nektarine is active, will automatically switch back to DAW mode.
- Selecting another Nektarine track following will automatically activate that instance.

## Aruba and Groove Agent

Steinberg's Groove Agent plugin can be controlled from Aruba using one of the prepared templates described on [this page](#).

Note that Groove Agent SE is not a VST3 plugin and therefore cannot be hosted in Nektarine.

## Routing Aruba's MIDI Out to a Specific Track in Cubase

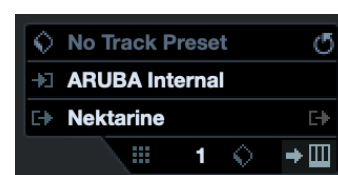
Routing Aruba to one specific track is useful. If you plan to use the sequencer running alongside Cubase for example, routing to one track only prevents the sequencer from playing notes on other tracks, as they are selected. To set this up, complete the following steps.

- Go to Studio/Studio Setup and make sure that all ports are now unticked in the 'In 'ALL MIDI Inputs"' column. If you followed the setup on page 1, that means the macOS: 'ARUBA Internal' or in Windows: 'ARUBA' port should now be unticked as well as all the others.

- Select the track you want Aruba routed to. Then click on the MIDI in field (by default its set to 'ALL MIDI Inputs') and select the Aruba MIDI port you unticked in Studio Setup. This will route Aruba to this track only, unless you select it also for other tracks.

- Activate the amber monitor button for the track. This ensures you can hear MIDI data sent to the track from Aruba, even when 'Record enabled' is not active.

You can also activate Nektarine instance Lock so Aruba controls don't change, even if you change track. Press [Shift]+[Lock] to Lock/Unlock the current instance.



## Support

If you are not getting the results described, please check your installation one more time as well as the [Aruba support pages](#).